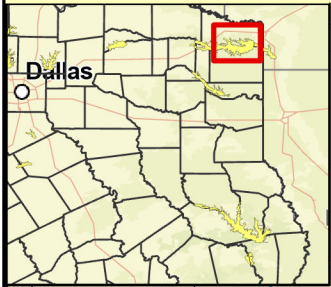


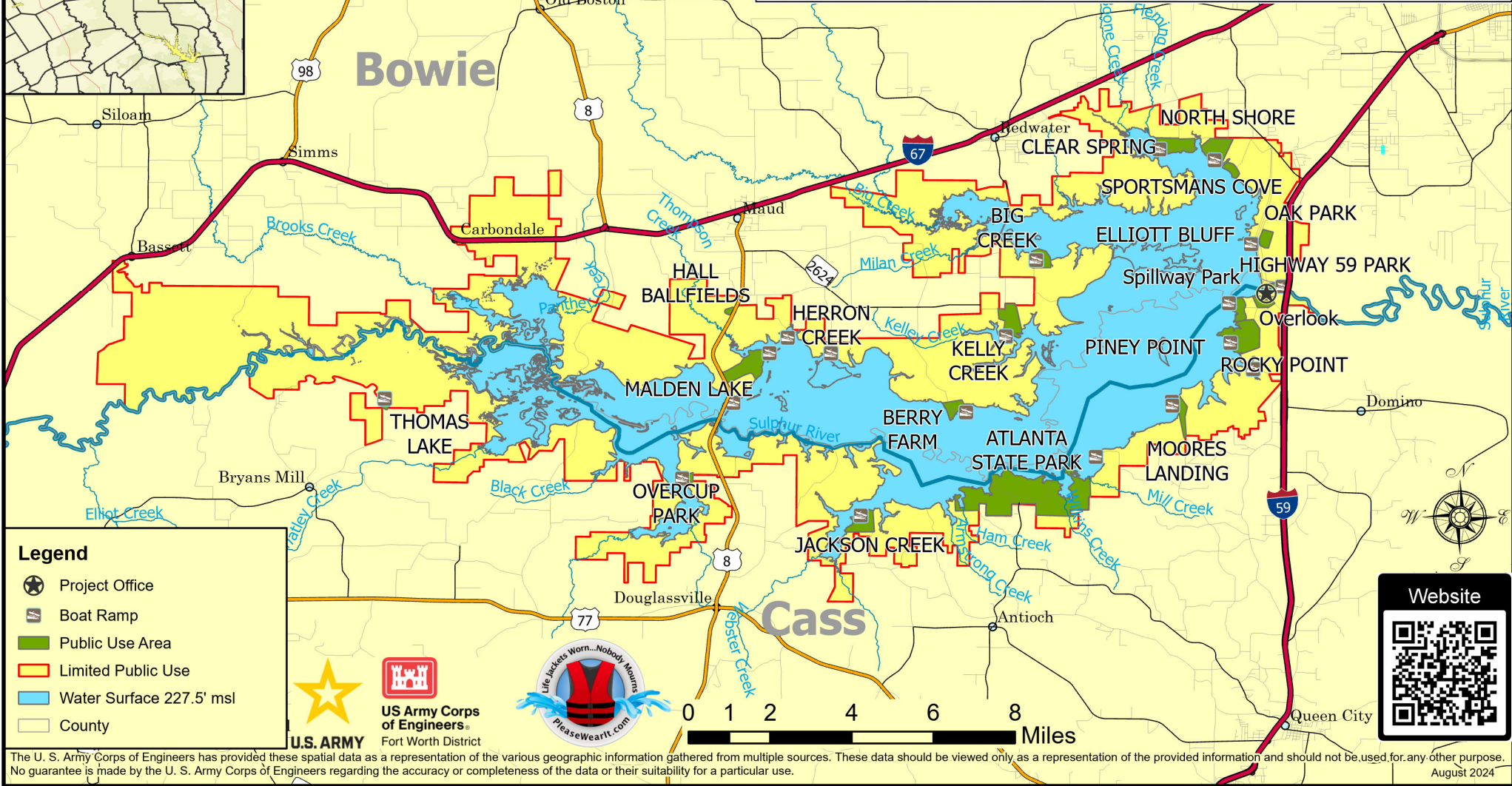
Wright Patman Reservoir

64 Clear Springs Park
Texarkana, TX 75501
903.838.8781

Emergency : Call 911
Bowie County Sheriff: 903.798.3149
Cass County Sheriff: 903.756.7511



	CAMPING AVAILABLE	ELECTRICAL PLUGHOOKUPS	WATER PLUGHOOKUPS	SOLAR HOOKUPS	DUMP STATION	RESTROOMS	SHOWERS	PICNIC SITES	SWIMMING AREA	PLAYGROUND	FISHING FACILITIES	TRAILS	MARINA	BOAT RAMP	OPERATING AGENCY
ATLANTA STATE PARK															TEXAS PARKS AND WILDLIFE
BERRY FARM															BOWIE COUNTY
BIG CREEK LANDING															PRIVATE
CLEAR SPRINGS PARK															CORPS OF ENGINEERS
ELLIOTT BLUFF															CORPS OF ENGINEERS
HALL BALLFIELDS															PRIVATE
HERRON CREEK															CORPS OF ENGINEERS
HIGHWAY 59 PARK															STATE OF TEXAS DOT
JACKSON CREEK															CORPS OF ENGINEERS
KELLY CREEK MARINA															PRIVATE
MALDEN LAKE CAMPGROUND															CORPS OF ENGINEERS
MALDEN LAKE DAY USE AREA															CORPS OF ENGINEERS
MOORE'S LANDING															CASS COUNTY
NORTH SHORE PARK															CORPS OF ENGINEERS
OAK PARK															CORPS OF ENGINEERS
OVERCUP															CORPS OF ENGINEERS
PINEY POINT PARK															CORPS OF ENGINEERS
ROCKY POINT PARK															CORPS OF ENGINEERS
SPILLWAY PARK															CORPS OF ENGINEERS
THOMAS LAKE RAMP															CORPS OF ENGINEERS
FACILITIES FURNISHED BY:	GOVERNMENT	CONCESSIONAIRE	BOTH												CORPS OF ENGINEERS



The U. S. Army Corps of Engineers has provided these spatial data as a representation of the various geographic information gathered from multiple sources. These data should be viewed only as a representation of the provided information and should not be used for any other purpose. No guarantee is made by the U. S. Army Corps of Engineers regarding the accuracy or completeness of the data or their suitability for a particular use.

August 2024