

# WHITNEY LAKE

## Three Rivers Region

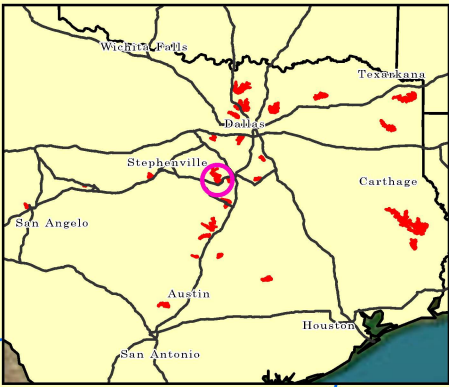
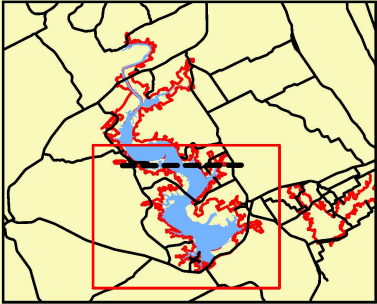
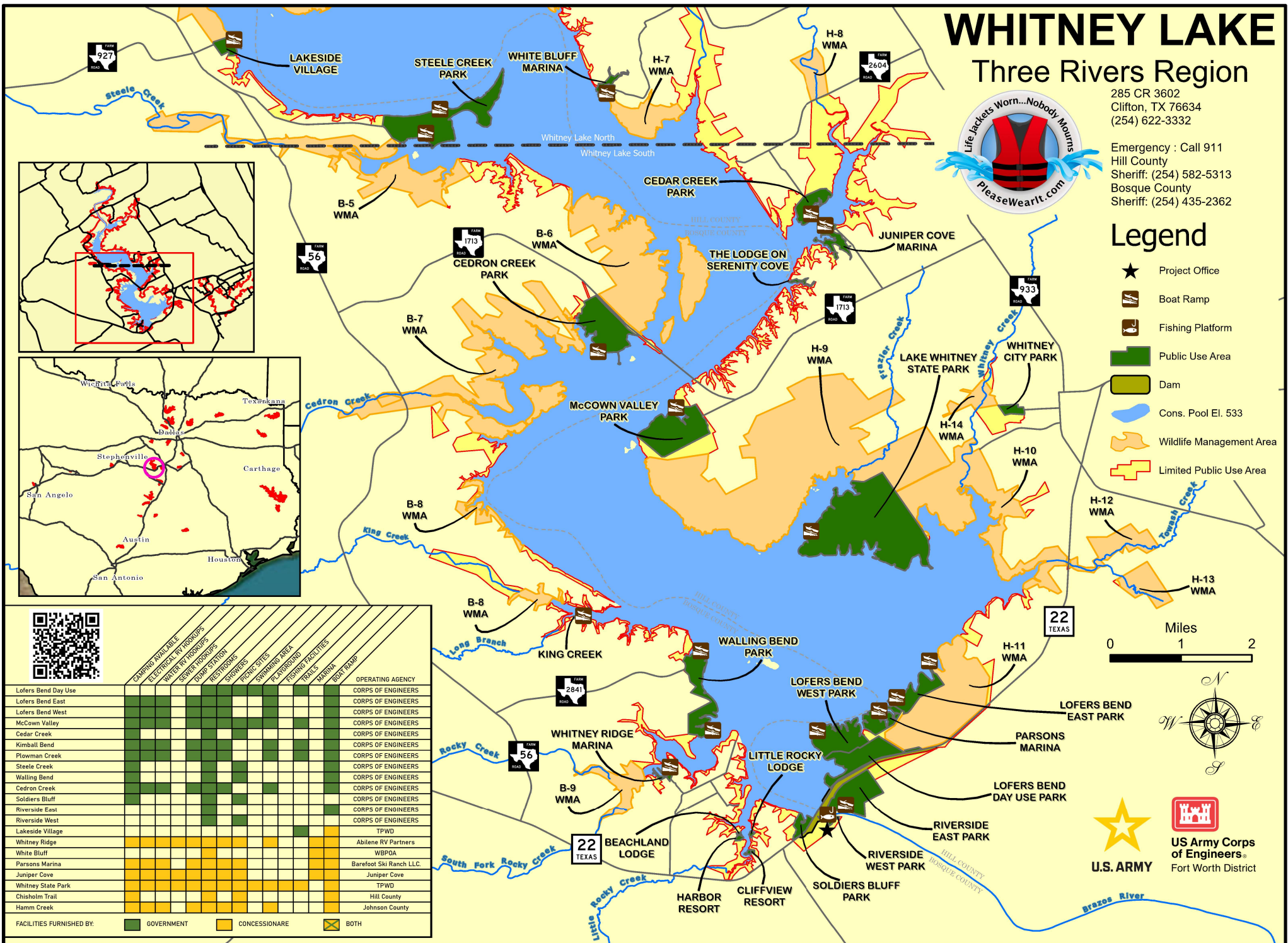
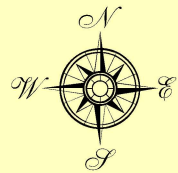
285 CR 3602  
Clifton, TX 76634  
(254) 622-3332

Emergency : Call 911  
Hill County  
Sheriff: (254) 582-5313  
Bosque County  
Sheriff: (254) 435-2362



### Legend

- ★ Project Office
- 🚤 Boat Ramp
- 🎣 Fishing Platform
- 🌿 Public Use Area
- 🏰 Dam
- 🌊 Cons. Pool El. 533
- 🟡 Wildlife Management Area
- 🔴 Limited Public Use Area



	CAMPING AVAILABLE	ELECTRICITY	WATER RV PROHOOKUPS	SEWER PROHOOKUPS	DECK PATIO	RESTROOMS	SHOWERS	WITCH SITES	SHOOTING AREA	PLAYGROUND	FISHING FACILITIES	TRAILS	BOAT RAMP	OPERATING AGENCY
Lofers Bend Day Use														CORPS OF ENGINEERS
Lofers Bend East														CORPS OF ENGINEERS
Lofers Bend West														CORPS OF ENGINEERS
McCown Valley														CORPS OF ENGINEERS
Cedar Creek														CORPS OF ENGINEERS
Kimball Bend														CORPS OF ENGINEERS
Plowman Creek														CORPS OF ENGINEERS
Steele Creek														CORPS OF ENGINEERS
Walling Bend														CORPS OF ENGINEERS
Cedron Creek														CORPS OF ENGINEERS
Soldiers Bluff														CORPS OF ENGINEERS
Riverside East														CORPS OF ENGINEERS
Riverside West														CORPS OF ENGINEERS
Lakeside Village														TPWD
Whitney Ridge														Abilene RV Partners
White Bluff														WBPOA
Parsons Marina														Barefoot Ski Ranch LLC.
Juniper Cove														Juniper Cove
Whitney State Park														TPWD
Chisholm Trail														Hill County
Hamm Creek														Johnson County

FACILITIES FURNISHED BY: ■ GOVERNMENT ■ CONCESSIONARE ■ BOTH