







US Army Corps of Engineers®

LEWISVILLE LAKE HUNTING MAP 2020-2021

Legend

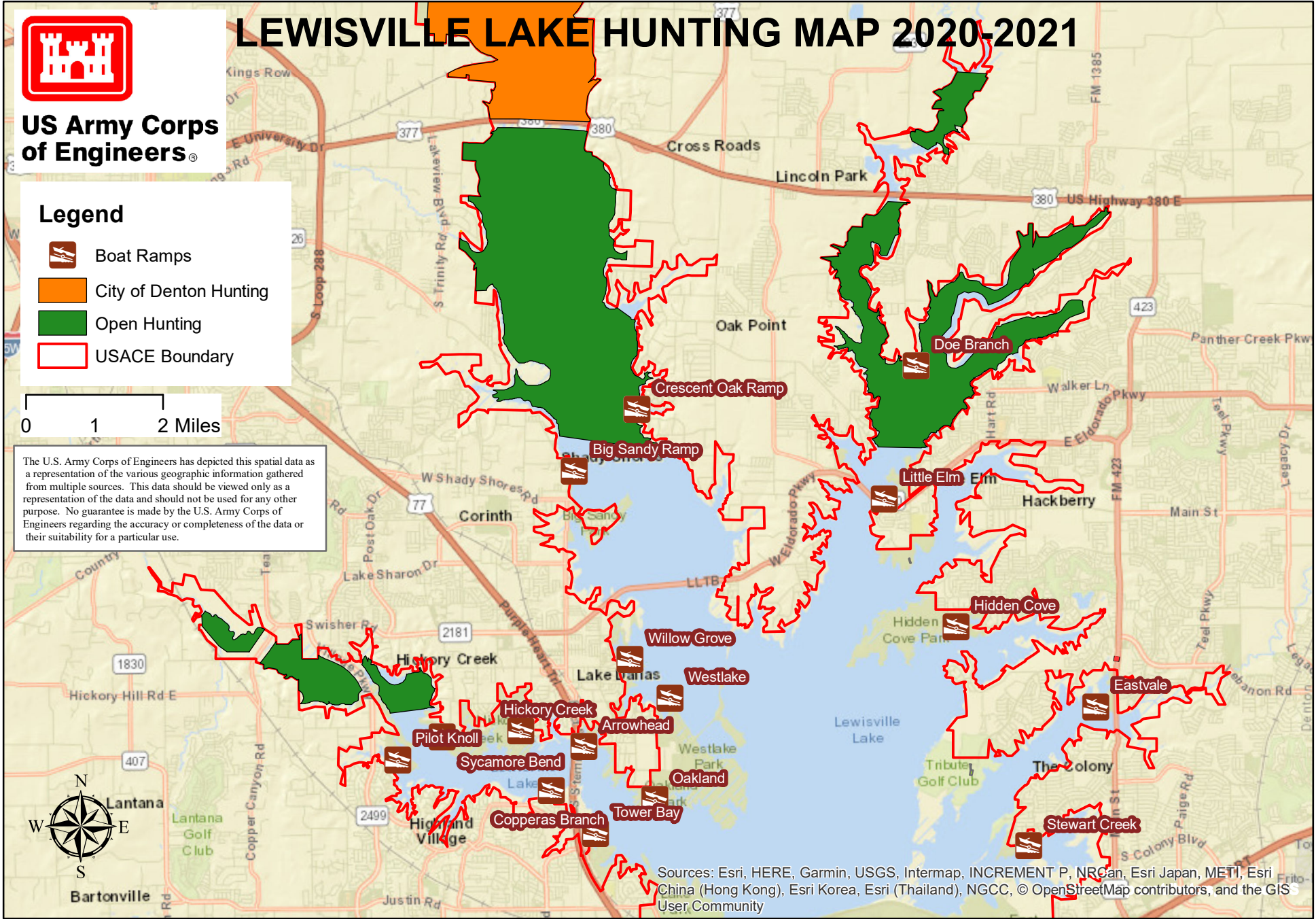
-  Boat Ramps
-  City of Denton Hunting
-  Open Hunting
-  USACE Boundary

0 1 2 Miles

The U.S. Army Corps of Engineers has depicted this spatial data as a representation of the various geographic information gathered from multiple sources. This data should be viewed only as a representation of the data and should not be used for any other purpose. No guarantee is made by the U.S. Army Corps of Engineers regarding the accuracy or completeness of the data or their suitability for a particular use.



Sources: Esri, HERE, Garmin, USGS, Intermap, INCREMENT P, NRCan, Esri Japan, METI, Esri China (Hong Kong), Esri Korea, Esri (Thailand), NGCC, © OpenStreetMap contributors, and the GIS User Community



U.S. ARMY CORPS OF
ENGINEERS
FORT WORTH DISTRICT

Lewisville Lake

Hunting Policy

General Regulations

Hunting Zones: Project lands open to hunting are shaded in green. All other areas are closed to hunting. It is the hunter's responsibility to observe property lines and be aware of the boundaries of the hunting area he or she uses.

In addition, hunting or shooting within 600 feet of homes, developed parks, fishing piers or platforms, or outlet structures is prohibited.

Reminder: It is illegal to shoot across both roadways and property lines.

Legal Game: Dove, coyote, turkey, rails, snipe, squirrel, quail, rabbits, feral hogs, and waterfowl. **Deer hunting is prohibited on project lands.**

Bag Limits: Bag limits are the same as those listed in the Texas Parks and Wildlife Hunting guide for 2020-2021 Season.

Open Season: Hunting on project lands is permitted as from September 1, 2020 to August 31, 2021, in accordance with Texas Parks and Wildlife Department seasons for Denton County specifically for legal game listed in this policy. All Project lands that are open to hunting are within Denton County.

Legal Hunting Weapons and Methods:

Hunting of feral hogs is restricted to legal archery equipment only. Hunting is restricted to the use of shotguns with shot no larger than #2, bows and arrows, and crossbows. Non-toxic shot is required when hunting waterfowl. Rifles and pistols are prohibited. Dogs may be used when hunting small game, upland game birds and waterfowl. All trapping is prohibited. Calls may be used for legal species listed, but must follow state and federal regulations.

Hunting Licenses, Permits and Fees:

Hunters must have in their possession a valid state hunting license and a U.S. Army Corps of Engineers hunting permit while hunting on project lands. All hunters must have completed a state approved hunter education course or have been exempted by the Texas Parks and Wildlife department prior to being issued a Corps

of Engineers hunting permit. There is no charge for the permit. Hunters must display a Corps of Engineers vehicle permit on the dashboard of their vehicle while hunting on USACE lands.

Hunter Responsibility:

All hunters must obey hunting regulations issued by county, state, and federal governments, and abide by the Fort Worth District hunting policy. All persons hunting on Corps of Engineers lands or water will be held liable for any conduct or action which endangers the safety of the project visitors or adjacent landowners and for damage to property on project lands or adjoining private property.

Maps:

For more information or assistance, call the Lewisville/Ray Roberts Lake Office at 469-645-9100. Office hours are Monday-Friday, 8:00 am- 4:30 pm. The office address is 1801 N. Mill Street, Lewisville, TX 75057.