



U.S. ARMY



US Army Corps
of Engineers®

Proposed Plan



Clear Lake Park (Multi-purpose; Class A)
Lease – City of Princeton

**Bratonia Park (Access Point)
Permanently close**

Highland Park (Access Point)
Lease – City of Lucas

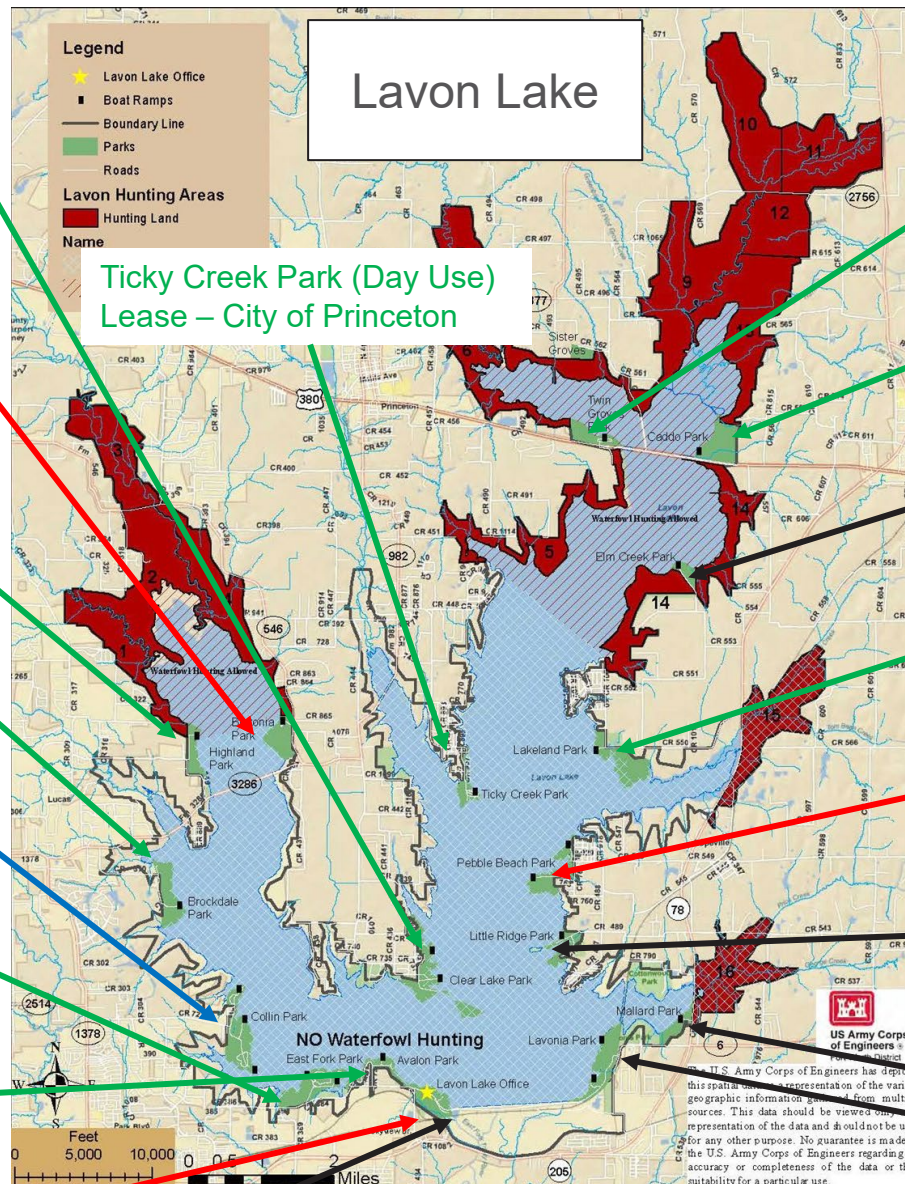
Brockdale Park (Access Point)
Lease – City of Lucas

Collin Park & Marina (Leased)
Remains the same

East Fork Park (Multi-purpose; Class A)
Lease – City of Wylie

Avalon Park (Day Use)
Lease – City of Wylie

**Little Avalon Park (Day Use)
Permanently close**



Ticky Creek Park (Day Use)
Lease – City of Princeton

Twin Groves Park (Access Point)
Lease – City of Princeton

Caddo Park (Day Use)
Lease – City of Farmersville

Elm Creek Park (Access Point)
Keep – convert to gravel road & parking

Lakeland Park (Day Use)
Lease – City of Farmersville

**Pebble Beach Park (Day Use)
Permanently close**

Little Ridge Park (Day Use)
Keep

Mallard Park (Day Use)
Keep

Lavonia Park (Multi-purpose; Class A)
Keep

Stilling Basin (Fishing Pier)
Keep