

Jim Chapman Lake

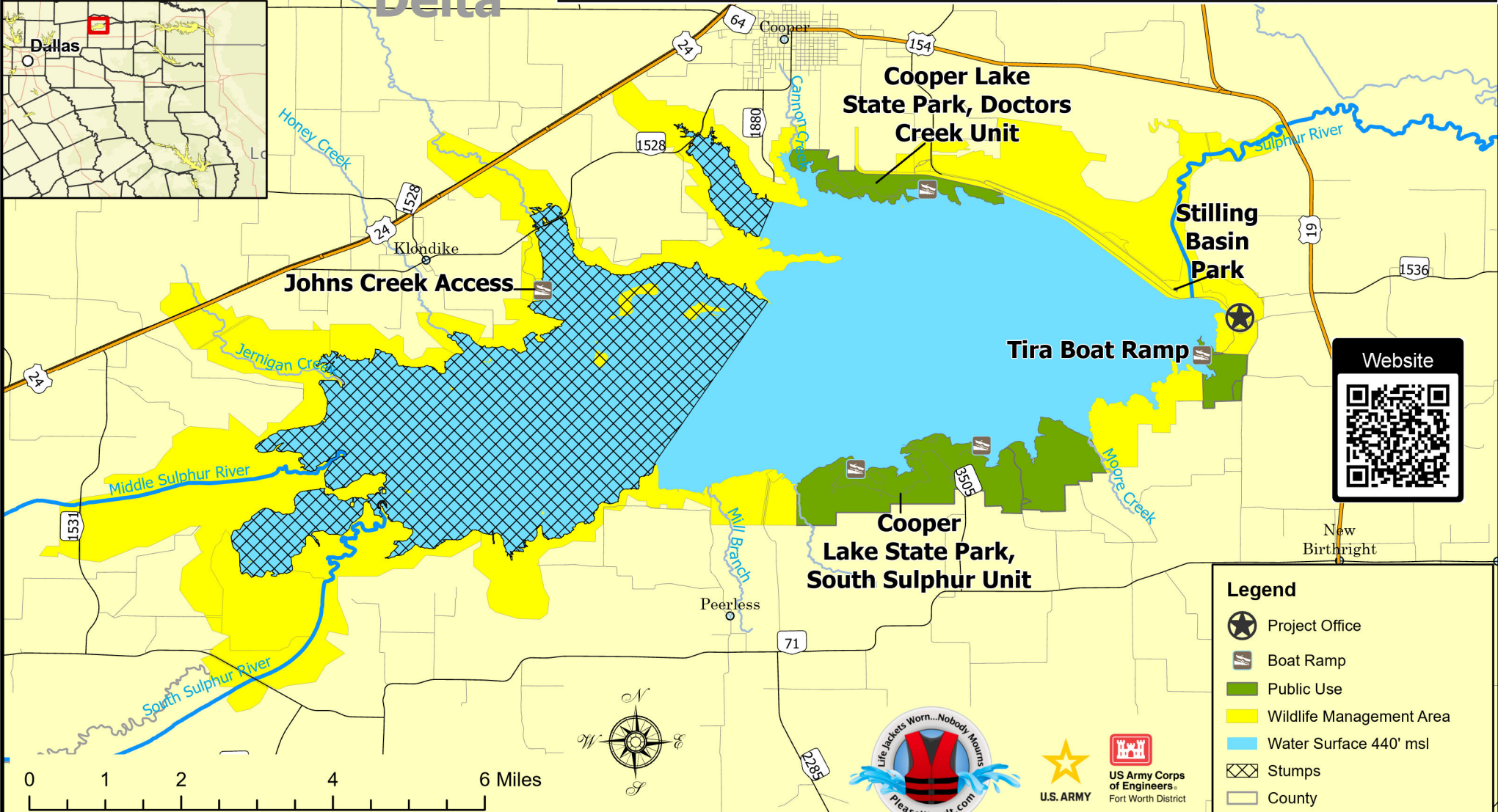
Cooper Dam

828 County Road 4795
Sulphur Springs, TX 75482-0453

Emergency : Call 911
Delta County Sheriff: 903.395.2146
Hopkins County Sheriff: 903.438.4040
TPWD Wildlife Office: 903.945.3132
TPWD Doctors Creek Park: 903.395.3100
TPWD South Sulphur Park: 903.945.5256
USACE Project Office: 903.945.2108



	CAMPING AVAILABLE	ELECTRICAL RV HOOKUPS	WATER RV HOOKUPS	SCREENED SHELTER	CABIN	COTTAGE	DUMP STATION	RESTROOMS	SHOWERS	PICNIC SITES	SWIMMING AREA	PLAYGROUND	FISHING FACILITIES	TRAILS	BOAT RAMP	OPERATING AGENCY
Doctors Creek Park																TEXAS PARKS AND WILDLIFE
Johns Creek																TEXAS PARKS AND WILDLIFE
South Sulphur Park																TEXAS PARKS AND WILDLIFE
Stilling Basin																CORPS OF ENGINEERS
Tira Ramp																TEXAS PARKS AND WILDLIFE
FACILITIES FURNISHED BY:	GOVERNMENT					CONCESSIONAIRE					BOTH					



- Legend**
- Project Office
 - Boat Ramp
 - Public Use
 - Wildlife Management Area
 - Water Surface 440' msl
 - Stumps
 - County

