



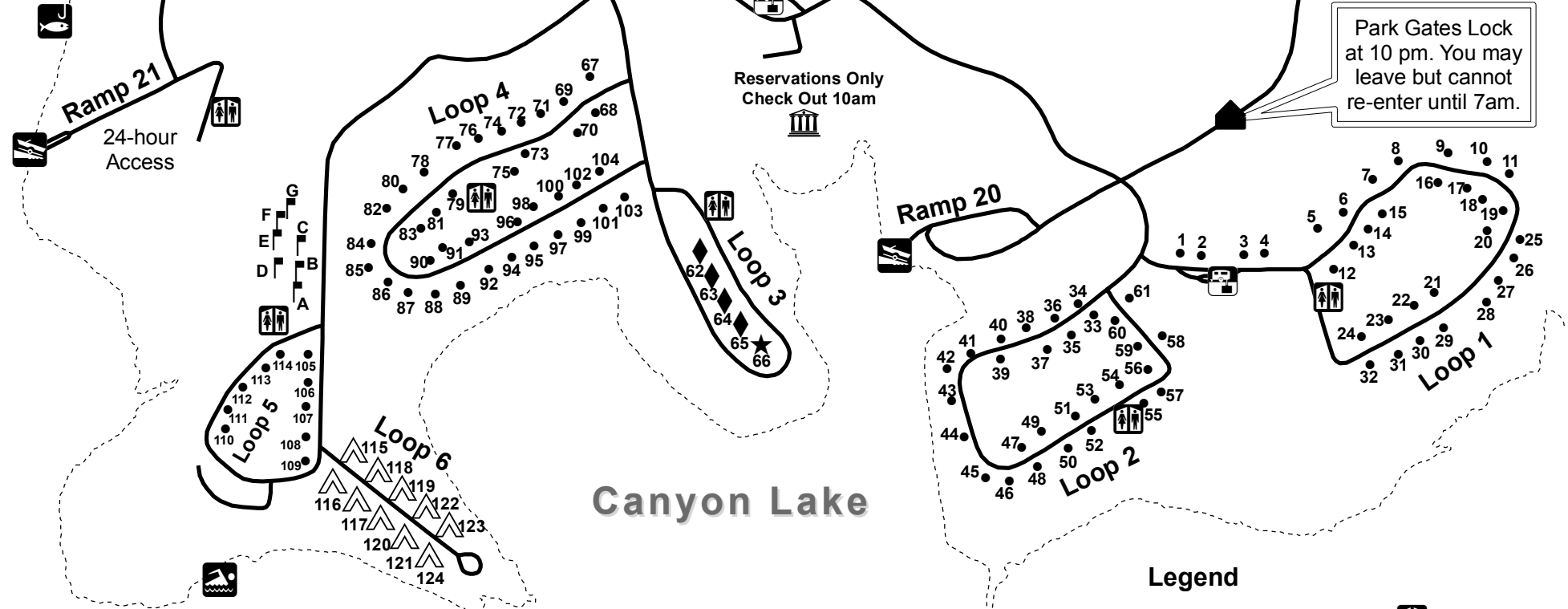
US Army Corps
of Engineers
Fort Worth District

Potters Creek Park



← To FM 306
Potters Creek Rd
Causeway Rd

Park Gates Lock at 10 pm. You may leave but cannot re-enter until 7am.



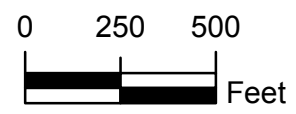
*Camping Only; NO Day Use
 *Open Year-Round; 7 am – 10 pm
 *Amenities:
 Boat Ramp; Shower; Flush Toilet; Dump Station
 *Walkers, joggers, hikers & Bikers: Not Allowed
 *Drive-Thru Policy:
 10 Minutes Free
 Daylight Hours Only (Mon-Thurs)
 Restrictions:
 >Fri-Sun, Holidays & during Peek Occupancy

*Fees: All Sites have Electric and Water

Group Pavilion =	\$100 /Day
10 Tent Sites =	\$18 /Night
7 Screened Shelters =	\$40 /Night
109 Single RV Site =	\$24 /Night
1 Double RV Site =	\$40 /Night
4 Triple RV Site =	\$60 /Night

Legend

- RV Site
- ⌘ Screened Shelter
- △ Tent Camping
- ★ Family - Double Site
- ◆ Family - Triple Site
- ⌘ Group Shelter
- ⬛ Gate House
- ⌘ Dump Station
- ⌘ Restroom
- ⌘ Boat Ramp
- ⌘ Fishing Pier
- ⌘ Swim Beach
- Shoreline
- Roads



Public use of facilities, land and water surfaces of Canyon Lake is governed by certain laws and regulations. All laws of the State of Texas pertaining to public conduct apply.

Additionally, Title 36, Code of Federal Regulations, Part 327, sets forth expected standards of park use. These are based on safe practice and common sense, but many are unfamiliar to the first-time visitor.

A list of the most often violated provisions of Title 36 is listed below. This is not a complete list of regulations. Even if a section of Title 36 is not listed below, it still applies.

******FOR EMERGENCIES DIAL 911******

1. Camping is limited to 14 days in a 30-day period. (36 CFR 327.7b)
2. Park Opens at 7 am and closes at 10 pm. **Visitors to campers must leave park by 10 pm.** (36 CFR 327.12a)
3. **Quiet hours are from 10 pm to 6 am.** These will be enforced. (36 CFR 327.12b)
4. Radios or car stereos must be kept at a sound level that will not disturb other campers and visitors. (36 CFR 327.12b)
5. **Fireworks or loaded firearms are prohibited.** (36 CFR 327.13)
6. **DO NOT MAKE ROCK FIRE RINGS.** Rock fire rings or ground fires are prohibited. Fires must be confined to stand up grills or metal fire rings provided for that purpose. (36 CFR 327.10b)
7. **Cutting or breaking of trees or tree limbs is prohibited.** Gathering of dead wood on the ground is permitted, provided that the wood is used in the park. (36 CFR 327.14b,c)
8. All vehicles must be parked in designated park spaces and not the road. No vehicle is to be used off road. It is prohibited. (36 CFR 327.2)
9. Swimming is at your own risk. (36 CFR 327.5a)
10. **Swimming, sun bathing, or fishing on or around boat ramps or docks is prohibited.** (36 CFR 327.5a)
11. **Pets must be kept on a leash not longer than six feet in length, at all times.** No pets allowed on

beaches. Pets may not be left unattended. (36 CFR 327.11)

12. **Persons shall be responsible for proper removal and disposal of any waste produced by animals.** (36 CFR 327.11)
13. Keep campsites and park grounds free of litter; **deposit trash in receptacles provided.** (36 CFR 327.9)
14. Vehicle washing of any kind is not permitted on camp grounds. (36 CFR 327.9)
15. **Visitors must obey all posted signs and restrictions.** (36 CFR 327.12)

Campsite Rules

- Campsite rentals limited to one per adult customer. Individuals may not rent sites for friends or relatives arriving later.
- Check in time is 3 pm. **Checkout time is at 2 pm the day you leave.**
- Maximum of 10 persons per single-use campsite. This includes all visitors.
- Maximum of two camping units per single-use campsite. Examples: (1 RV + 1 Tent) or (1 Trailer + 1 Tent) or (2 Tents).
- Maximum of 2 vehicles or 1 boat & 1 vehicle per single-use campsite for overnight occupancy (does not include RV).
- Maximum 2 extra vehicles per single-use campsite between 7 am – 10 pm.
- **1 boat or jet-ski trailer per site limit.**
- **NO 2nd** boat or jet-ski trailer allowed.
- Vehicle = anything that requires a parking space.
- Vehicles with visitor passes must exit the park by 10 pm.
- Group shelters and group camping facilities are available in some parks. Call (830) 964 – 3341 for details.

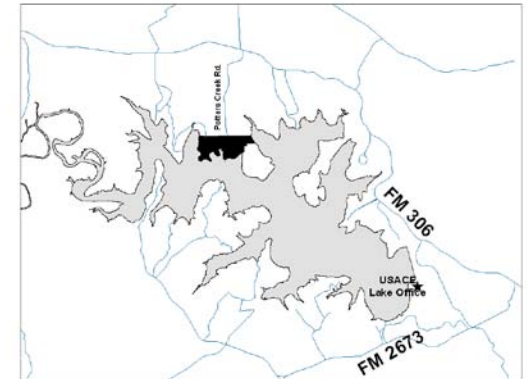
Please Have A Safe And Enjoyable Visit

Life Jackets Save Lives.
It Floats, You Don't!
Wear Your Life Jacket!

Canyon Lake

Guidelines for Park Usage

Potters Creek Park



U.S. Army Corps of Engineers
Canyon Lake Office
601 C.O.E. Road
Canyon Lake, TX
(830) 964 – 3341
www.swf.usace.army.mil



**US Army Corps
of Engineers** ®
Fort Worth District